



Body Size

3/4" up to 4"

Screw-to-Connect

75-Series

**Technical Description**

Parker Snap-tite 75 series couplings are designed for working pressures up to 345 bar. Screw-to-connect design available in steel or stainless steel.

**Advantages**

- Robust coupling for use in high pressure hydraulic service
- Connectable under residual pressure
- Wide range of sizes
- DBP version is "Fire Safe" rated to API 16D

**Applications**

- Cranes
- Power tongs
- Horizontal boring
- Dewatering
- Oilfields
- Offshore drilling

**Working Pressure**

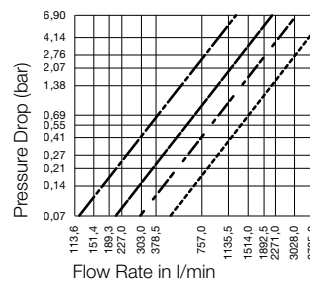
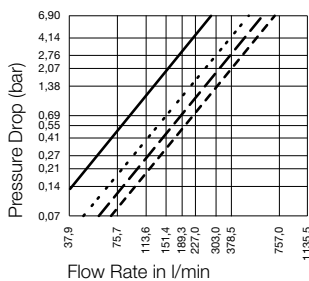
See charts.

**Working Temperature**

- 35°C up to +120°C (NBR)
  - 26°C up to +204°C (FKM)
  - 56°C up to +120°C (EPR)
- depending on the medium.

75-Series is also available with FKM or EPR seal. Add the suffix **V** for FKM and the suffix **E** for EPR to the part number, e.g. **75C12-12FWV**.

| Material Coupling | Steel | Stainless Steel |
|-------------------|-------|-----------------|
| Coupling Body     | Steel | AISI 316        |
| Sleeve            | Steel | AISI 316        |
| Valve             | Steel | AISI 316        |
| Springs           | Steel | AISI 302/ 17-7  |
| Seals             | NBR   | NBR             |
| Valve Holder      | Steel | AISI 316        |
| Material Plug     | Steel | Stainless Steel |
| Plug Body         | Steel | AISI 316        |
| Valve             | Steel | AISI 316        |
| Springs           | Steel | AISI 302/ 17-7  |
| Seals             | NBR   | NBR             |
| Valve Holder      | Steel | AISI 316        |

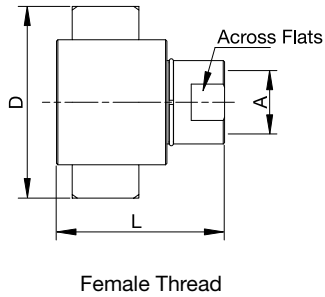
**Flow Capacity with Hydraulic Oil 88 SSU with Viscosity of 18cSt**

- Body Size 3/4"
- - - - - Body Size 1"
- - - - - Body Size 1 1/4"
- - - - - Body Size 1 1/2"
- - - - - Body Size 2"
- - - - - Body Size 2 1/2"
- - - - - Body Size 3"
- - - - - Body Size 4"

# Couplings

# 75-Series Steel

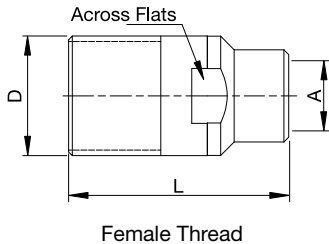
| Body Size | Connection A      | L mm   | D mm        | Across Flats mm | Weight kg | Max. Operating Pressure in bar | Part Number   |
|-----------|-------------------|--------|-------------|-----------------|-----------|--------------------------------|---------------|
| 3/4"      | 3/4-14 NPSF       | 72,14  | 47,50 (hex) | 33,27           | 0,59      | 345                            | 75C12-12FW    |
| 3/4"      | G 3/4             | 72,14  | 47,50 (hex) | 33,27           | 0,59      | 345                            | 75C12-12RPW   |
| 3/4"      | 3/4-14 NPSF       | 72,14  | 47,50 (hex) |                 | 0,59      | 345                            | 75C12-12F-DBP |
| 1"        | 1-11 1/2 NPSF     | 87,63  | 107,95      | 42,93           | 1,27      | 345                            | 75C16-16FW    |
| 1"        | G 1               | 87,63  | 107,95      | 42,93           | 1,27      | 345                            | 75C16-16RPW   |
| 1"        | 1-11 1/2 NPSF     | 87,63  | 107,95      |                 | 1,27      | 345                            | 75C16-16F-DBP |
| 1 1/4"    | 1 1/4-11 1/2 NPTF | 111,76 | 120,65      | 50,80           | 2,04      | 345                            | 75C20-20FW    |
| 1 1/4"    | G 1 1/4           | 111,76 | 120,65      | 50,80           | 2,04      | 345                            | 75C20-20RPW   |
| 1 1/4"    | 1 1/4-11 1/2 NPTF | 111,76 | 120,65      |                 | 2,04      | 345                            | 75C20-20F-DBP |
| 1 1/2"    | 1 1/2-11 1/2 NPTF | 128,02 | 146,05      | 57,15           | 3,31      | 345                            | 75C24-24FW    |
| 1 1/2"    | G 1 1/2           | 128,02 | 146,05      | 57,15           | 3,31      | 345                            | 75C24-24RPW   |
| 1 1/2"    | 1 1/2-11 1/2 NPTF | 128,02 | 146,05      |                 | 3,31      | 345                            | 75C24-24F-DBP |
| 2"        | 2-11 1/2 NPT      | 154,18 | 171,45      | 76,20           | 6,98      | 345                            | 75C32-32FW    |
| 2"        | G 2               | 154,18 | 171,45      | 76,20           | 6,98      | 345                            | 75C32-32RPW   |
| 2"        | 2-11 1/2 NPT      | 154,18 | 171,45      |                 | 6,98      | 345                            | 75C32-32F-DBP |
| 2 1/2"    | 2 1/2 - 8 NPTF    | 134,37 | 203,20      | 88,90           | 9,07      | 207                            | 75C40-40FW    |
| 2 1/2"    | G 2 1/2           | 134,37 | 203,20      | 88,90           | 9,07      | 207                            | 75C40-40RPW   |
| 3"        | 3-8 NPTF          | 148,34 | 215,90      | 107,95          | 13,60     | 207                            | 75C48-48FW    |
| 3"        | G 3               | 148,34 | 215,90      | 107,95          | 13,60     | 207                            | 75C48-48RPW   |



# Plugs

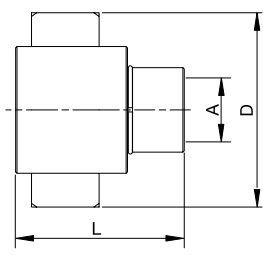
# 75-Series Steel

| Body Size | Connection A      | L mm   | D mm   | Across Flats mm | Weight kg | Max. Operating Pressure in bar | Part Number   |
|-----------|-------------------|--------|--------|-----------------|-----------|--------------------------------|---------------|
| 3/4"      | 3/4-14 NPSF       | 83,06  | 44,45  | 39,62           | 0,44      | 345                            | 75N12-12FW    |
| 3/4"      | G 3/4             | 83,06  | 44,45  | 39,62           | 0,44      | 345                            | 75N12-12RPW   |
| 3/4"      | 3/4-14 NPSF       | 83,06  | 44,45  |                 | 0,44      | 345                            | 75N12-12F-DBP |
| 1"        | 1-11 1/2 NPSF     | 105,92 | 57,15  | 50,80           | 1,00      | 345                            | 75N16-16FW    |
| 1"        | G 1               | 105,92 | 57,15  | 50,80           | 1,00      | 345                            | 75N16-16RPW   |
| 1"        | 1-11 1/2 NPSF     | 105,92 | 57,15  |                 | 1,00      | 345                            | 75N16-16F-DBP |
| 1 1/4"    | 1 1/4-11 1/2 NPTF | 136,14 | 66,55  | 60,45           | 1,72      | 345                            | 75N20-20FW    |
| 1 1/4"    | G 1 1/4           | 136,14 | 66,55  | 60,45           | 1,72      | 345                            | 75N20-20RPW   |
| 1 1/4"    | 1 1/4-11 1/2 NPTF | 136,14 | 66,55  |                 | 1,72      | 345                            | 75N20-20F-DBP |
| 1 1/2"    | 1 1/2-11 1/2 NPTF | 151,64 | 82,30  | 73,15           | 2,95      | 345                            | 75N24-24FW    |
| 1 1/2"    | G 1 1/2           | 151,64 | 82,30  | 73,15           | 2,95      | 345                            | 75N24-24RPW   |
| 1 1/2"    | 1 1/2-11 1/2 NPTF | 151,64 | 82,30  |                 | 2,95      | 345                            | 75N24-24F-DBP |
| 2"        | 2-11 1/2 NPT      | 179,07 | 101,60 | 88,90           | 5,78      | 345                            | 75N32-32FW    |
| 2"        | G 2               | 179,07 | 101,60 | 88,90           | 5,78      | 345                            | 75N32-32RPW   |
| 2"        | 2-11 1/2 NPT      | 179,07 | 101,60 |                 | 5,78      | 345                            | 75N32-32F-DBP |
| 2 1/2"    | 2 1/2 - 8 NPTF    | 189,48 | 127,00 | 88,90           | 7,26      | 207                            | 75N40-40FW    |
| 2 1/2"    | G 2 1/2           | 189,48 | 127,00 | 88,90           | 7,26      | 207                            | 75N40-40RPW   |
| 3"        | 3-8 NPTF          | 209,80 | 152,40 | 107,95          | 12,96     | 207                            | 75N48-48FW    |
| 3"        | G 3               | 209,80 | 152,40 | 107,95          | 12,96     | 207                            | 75N48-48RPW   |



## Couplings

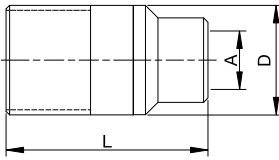
## 75-Series Stainless Steel



| Body Size | Connection A     | L mm   | D mm        | Weight kg | Max. Operating Pressure in bar | Part Number |
|-----------|------------------|--------|-------------|-----------|--------------------------------|-------------|
| 3/4"      | 3/4-14 NPSF      | 72,14  | 47,50 (hex) | 0,59      | 207                            | S75C12-12F  |
| 3/4"      | G 3/4            | 72,14  | 47,50 (hex) | 0,59      | 207                            | S75C12-12RP |
| 1"        | 1-11 1/2 NPSF    | 87,63  | 107,95      | 1,27      | 207                            | S75C16-16F  |
| 1"        | G 1              | 87,63  | 107,95      | 1,27      | 207                            | S75C16-16RP |
| 1 1/4"    | 1 1/4-11 1/2 NPT | 111,76 | 120,65      | 2,04      | 207                            | S75C20-20F  |
| 1 1/4"    | G 1 1/4          | 111,76 | 120,65      | 2,04      | 207                            | S75C20-20RP |
| 1 1/2"    | 1 1/2-11 1/2 NPT | 128,02 | 146,05      | 3,31      | 207                            | S75C24-24F  |
| 1 1/2"    | G 1 1/2          | 128,02 | 146,05      | 3,31      | 207                            | S75C24-24RP |
| 2"        | 2-11 1/2 NPT     | 154,18 | 171,45      | 6,98      | 207                            | S75C32-32F  |
| 2"        | G 2              | 154,18 | 171,45      | 6,98      | 207                            | S75C32-32RP |

## Plugs

## 75-Series Stainless Steel



| Body Size | Connection A     | L mm   | D mm   | Weight kg | Max. Operating Pressure in bar | Part Number |
|-----------|------------------|--------|--------|-----------|--------------------------------|-------------|
| 3/4"      | 3/4-14 NPSF      | 83,06  | 44,45  | 0,44      | 207                            | S75N12-12F  |
| 3/4"      | G 3/4            | 83,06  | 44,45  | 0,44      | 207                            | S75N12-12RP |
| 1"        | 1-11 1/2 NPSF    | 105,92 | 57,15  | 1,00      | 207                            | S75N16-16F  |
| 1"        | G 1              | 105,92 | 57,15  | 1,00      | 207                            | S75N16-16RP |
| 1 1/4"    | 1 1/4-11 1/2 NPT | 136,14 | 66,55  | 1,72      | 207                            | S75N20-20F  |
| 1 1/4"    | G 1 1/4          | 136,14 | 66,55  | 1,72      | 207                            | S75N20-20RP |
| 1 1/2"    | 1 1/2-11 1/2 NPT | 151,64 | 82,30  | 2,95      | 207                            | S75N24-24F  |
| 1 1/2"    | G 1 1/2          | 151,64 | 82,30  | 2,95      | 207                            | S75N24-24RP |
| 2"        | 2-11 1/2 NPT     | 179,07 | 101,60 | 5,78      | 207                            | S75N32-32F  |
| 2"        | G 2              | 179,07 | 101,60 | 5,78      | 207                            | S75N32-32RP |

## Dust Protection

## 75-Series

| Body Size | Version      | Material | Part Number |
|-----------|--------------|----------|-------------|
| 3/4"      | for coupling | Steel    | 75MDP-12    |
| 1"        | for coupling | Steel    | 75MDP-16    |
| 1 1/4"    | for coupling | Steel    | 75MDP-20    |
| 1 1/2"    | for coupling | Steel    | 75MDP-24    |
| 2"        | for coupling | Steel    | 75MDP-32    |
| 2 1/2"    | for coupling | Steel    | 75MDP-40    |
| 3"        | for coupling | Steel    | 75MDP-48    |
| 3/4"      | for plug     | Steel    | 75MDC-12    |
| 1"        | for plug     | Steel    | 75MDC-16    |
| 1 1/4"    | for plug     | Steel    | 75MDC-20    |
| 1 1/2"    | for plug     | Steel    | 75MDC-24    |
| 2"        | for plug     | Steel    | 75MDC-32    |
| 2 1/2"    | for plug     | Steel    | 75MDC-40    |
| 3"        | for plug     | Steel    | 75MDC-48    |

