



## Applications Area



## Technical Description

The FEM, FEC and IF series plug profile are produced according to ISO Standard 16028 and are compatible with other series complying with the same standard. These couplings offer a leakage free disconnection – mini-mal oil loss during uncoupling. Thanks to the valve design, the coupling has a minimum pressure drop, and thus achieves maximum cost-effectiveness. Exists in standard version (steel) and stainless steel.

## Advantages

- Can be operated with use of one hand.
- Safety locking feature as standard to prevent unintentional uncoupling.
- FEC with the pressure eliminator enable effortless connection under static pressure (up to rated working pressure).
- FEMP and FECP with push-pull features is suitable for multi-plates or when coupling is fixed on an application.

## Working Pressure

See charts.

## Working Temperature

-30°C up to +100°C (NBR)  
-25°C up to +200°C (FKM)  
depending on the medium.  
Special seals are available on request (see page 6).

## Available Valves

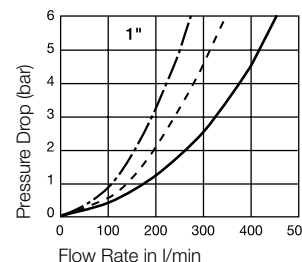
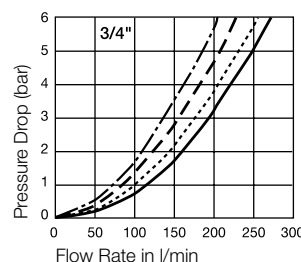
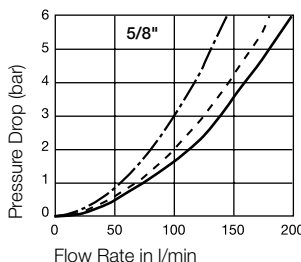
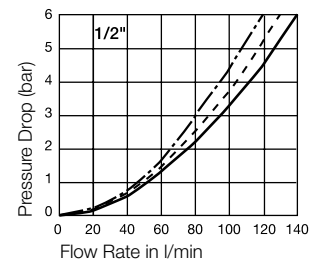
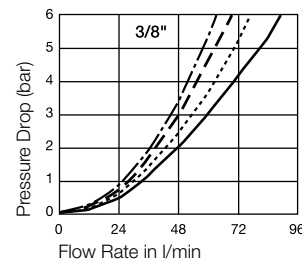
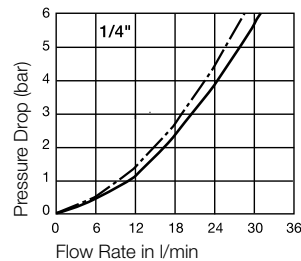
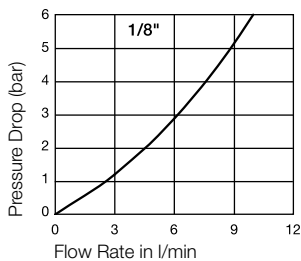


| Material Coupling              | FEM-Series: Standard / Steel           | FEC-Series: Push-Pull/Press. Elimin.   | IF-Series Stainl. Steel |
|--------------------------------|--|--|-------------------------|
| Coupling Body                  | Steel, zinc plated, passivated, sealed | Steel, nitrocarburizing                | AISI 316                |
| Sleeve                         | Steel, zinc plated, passivated, sealed | Steel, zinc plated, passivated, sealed | AISI 316                |
| Valve                          | Steel, zinc plated, passivated, sealed | Steel, zinc plated, passivated, sealed | AISI 316                |
| 2nd Valve                      |  | Brass                                  |                         |
| Springs                        | AISI 301                               | AISI 301                               | AISI 301                |
| Locking Balls                  | AISI 420 C                             | AISI 420 C                             | AISI 420 C              |
| Seals                          | NBR                                    | NBR                                    | FKM                     |
| Valve Holder                   | Steel, zinc plated, passivated         | Steel, zinc plated, passivated, sealed | AISI 316                |
| 2nd Valve Holder (up to 100°C) |  | Zinc Casting (NBR)                     |                         |
| 2nd Valve Holder (over 100°C)  |  | Brass (EPDM/FKM)                       | AISI 316                |
| Thread Body                    | Steel, zinc plated, passivated, sealed | Steel, zinc plated, passivated, sealed |                         |

| Material Plug                  | FEM-Series: Standard / Steel                 | FEC-Series: Push-Pull/Press. Elimin.         | IF-Series Stainl. Steel |
|--------------------------------|--|--|-------------------------|
| Plughousing                    | Steel hardened, zinc plated, passiv., sealed | Steel hardened, zinc plated, passiv., sealed | AISI 316                |
| Valve                          | Steel  | Steel, zinc plated, passivated, sealed       | AISI 316                |
| 2nd Valve                      |  | Brass  |                         |
| Springs                        | AISI 301                                     | AISI 301                                     | AISI 301                |
| Seals                          | NBR/PUR                                      | NBR  | FKM                     |
| Valve Holder                   | Brass  | Brass  | AISI 316                |
| 2nd Valve Holder (up to 100°C) |  | Zinc Casting (NBR)                           |                         |
| 2nd Valve Holder (over 100°C)  |  | Brass (EPDM/FKM)                             | AISI 316                |
| Thread Body                    | Steel  | Steel  | AISI 316                |

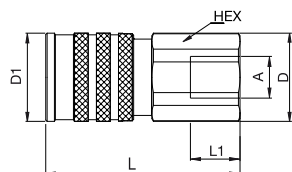
## Flow Capacity with Oil with Viscosity of 32cSt at 40°C as per ISO 7241/2-2000



— Standard FEM  
 - - - Both side pressure eliminator  
 - - - Couplings side pressure eliminator  
 - - - Plug side pressure eliminator  
 - - - One side pressure eliminator  
 (No difference in pressure drop / flow rate for the coupling and plug)

## Couplings

## FEM-Series

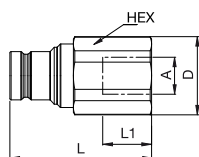


Female Thread

| Body Size | Connection A | Hex mm | L mm | L1 mm | D mm | D1 mm | Working Pressure connected in bar | Version  | Seal | Part Number*  |
|-----------|--------------|--------|------|-------|------|-------|-----------------------------------|----------|------|---------------|
| 1/8"      | G 1/8        | 19     | 40   | 8     | 20,5 | 20    | 450                               | Standard | NBR  | FEM-121-2FB   |
| 1/4"      | G 1/4        | 27     | 64   | 12    | 29,5 | 29    | 315                               | Standard | NBR  | FEM-251-4FB   |
| 1/4"      | G 3/8        | 27     | 64   | 12    | 29,5 | 29    | 315                               | Standard | NBR  | FEM-251-6FB   |
| 3/8"      | G 3/8        | 30     | 71   | 12    | 32   | 32    | 250                               | Standard | NBR  | FEM-371-6FB   |
| 3/8"      | G 1/2        | 30     | 73   | 14    | 32   | 32    | 250                               | Standard | NBR  | FEM-371-8FB   |
| 1/2"      | G 1/2        | 36     | 76   | 14    | 40   | 39    | 250                               | Standard | NBR  | FEM-501-8FB   |
| 1/2"      | G 3/4        | 36     | 80   | 16    | 40   | 39    | 250                               | Standard | NBR  | FEM-501-12FB  |
| 5/8"      | G 3/4        | 40     | 82   | 16    | 43   | 42    | 250                               | Standard | NBR  | FEM-621-12FB  |
| 3/4"      | G 3/4        | 46     | 96   | 16    | 50   | 46    | 250                               | Standard | NBR  | FEM-751-12FB  |
| 3/4"      | G 1          | 46     | 102  | 18    | 50   | 46    | 250                               | Standard | NBR  | FEM-751-16FB  |
| 1"        | G 1          | 55     | 105  | 18    | 60   | 55    | 200                               | Standard | NBR  | FEM-1001-16FB |
| 1"        | G 1 1/4      | 55     | 106  | 19    | 60   | 55    | 200                               | Standard | NBR  | FEM-1001-20FB |
|           |              |        |      |       |      |       |                                   |          |      |               |
|           |              |        |      |       |      |       |                                   |          |      |               |
|           |              |        |      |       |      |       |                                   |          |      |               |
|           |              |        |      |       |      |       |                                   |          |      |               |

## Plugs

## FEM-Series



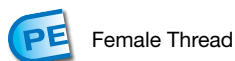
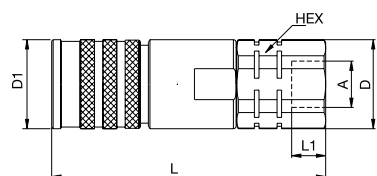
Female Thread

| Body Size | Connection A | Hex mm | L mm | L1 mm | D mm | D1 mm | Working Pressure connected in bar | Version  | Seal | Part Number*  |
|-----------|--------------|--------|------|-------|------|-------|-----------------------------------|----------|------|---------------|
| 1/8"      | G 1/8        | 17     | 35   | 8     | 18,6 |       | 450                               | Standard | NBR  | FEM-122-2FB   |
| 1/4"      | G 1/4        | 22     | 49   | 12    | 24,5 |       | 315                               | Standard | NBR  | FEM-252-4FB   |
| 1/4"      | G 3/8        | 22     | 49   | 12    | 24,5 |       | 315                               | Standard | NBR  | FEM-252-6FB   |
| 3/8"      | G 3/8        | 30     | 58   | 12    | 32   |       | 250                               | Standard | NBR  | FEM-372-6FB   |
| 3/8"      | G 1/2        | 30     | 60   | 12    | 32   |       | 250                               | Standard | NBR  | FEM-372-8FB   |
| 1/2"      | G 1/2        | 36     | 66   | 14    | 40   |       | 250                               | Standard | NBR  | FEM-502-8FB   |
| 1/2"      | G 3/4        | 36     | 70   | 16    | 40   |       | 250                               | Standard | NBR  | FEM-502-12FB  |
| 5/8"      | G 3/4        | 36     | 71   | 16    | 40   |       | 250                               | Standard | NBR  | FEM-622-12FB  |
| 3/4"      | G 3/4        | 46     | 77   | 16    | 50   |       | 250                               | Standard | NBR  | FEM-752-12FB  |
| 3/4"      | G 1          | 46     | 83   | 18    | 50   |       | 250                               | Standard | NBR  | FEM-752-16FB  |
| 1"        | G 1          | 55     | 89   | 18    | 60   |       | 200                               | Standard | NBR  | FEM-1002-16FB |
| 1"        | G 1 1/4      | 55     | 90   | 19    | 60   |       | 200                               | Standard | NBR  | FEM-1002-20FB |
|           |              |        |      |       |      |       |                                   |          |      |               |
|           |              |        |      |       |      |       |                                   |          |      |               |
|           |              |        |      |       |      |       |                                   |          |      |               |
|           |              |        |      |       |      |       |                                   |          |      |               |

\* For the old part number please have a look on the Cross-Reference-List on page 43.

## Couplings

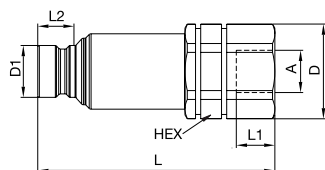
## FEM-Series



| Body Size | Connection A | Hex mm | L mm | L1 mm | L2 mm | D mm | D1 mm | Working Pressure connected in bar | Version        | Seal | Part Number*  |
|-----------|--------------|--------|------|-------|-------|------|-------|-----------------------------------|----------------|------|---------------|
| 1/4"      | G 1/4        | 27     | 91   | 12    |       | 29,5 | 29    | 315                               | Press. Elimin. | NBR  | FEC-251-4FB   |
| 1/4"      | G 3/8        | 27     | 91   | 12    |       | 29,5 | 29    | 315                               | Press. Elimin. | NBR  | FEC-251-6FB   |
| 3/8"      | G 3/8        | 30     | 99   | 12    |       | 32   | 32    | 250                               | Press. Elimin. | NBR  | FEC-371-6FB   |
| 3/8"      | G 1/2        | 30     | 101  | 14    |       | 32   | 32    | 250                               | Press. Elimin. | NBR  | FEC-371-8FB   |
| 1/2"      | G 1/2        | 40     | 112  | 14    |       | 43   | 39    | 250                               | Press. Elimin. | NBR  | FEC-501-8FB   |
| 1/2"      | G 3/4        | 40     | 115  | 16    |       | 43   | 39    | 250                               | Press. Elimin. | NBR  | FEC-501-12FB  |
| 5/8"      | G 3/4        | 40     | 117  | 16    |       | 43   | 42    | 250                               | Press. Elimin. | NBR  | FEC-621-12FB  |
| 3/4"      | G 3/4        | 50     | 130  | 16    |       | 54   | 46    | 250                               | Press. Elimin. | NBR  | FEC-751-12FB  |
| 3/4"      | G 1          | 50     | 136  | 16    |       | 54   | 46    | 250                               | Press. Elimin. | NBR  | FEC-751-16FB  |
| 1"        | G 1          | 55     | 143  | 18    |       | 60   | 55    | 200                               | Press. Elimin. | NBR  | FEC-1001-16FB |
| 1"        | G 1 1/4      | 55     | 146  | 20    |       | 60   | 55    | 200                               | Press. Elimin. | NBR  | FEC-1001-20FB |

## Plugs

## FEM-Series

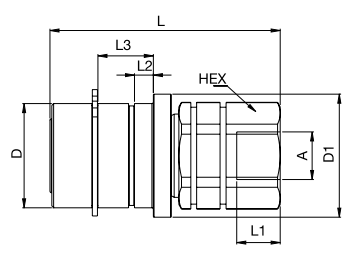


| Body Size | Connection A | Hex mm | L mm | L1 mm | L2 mm | D mm | D1 mm | Working Pressure connected in bar | Version        | Seal | Part Number*  |
|-----------|--------------|--------|------|-------|-------|------|-------|-----------------------------------|----------------|------|---------------|
| 1/4"      | G 1/4        | 27     | 74   | 12    | 11,3  | 29,5 | 16,1  | 315                               | Press. Elimin. | NBR  | FEC-252-4FB   |
| 1/4"      | G 3/8        | 27     | 74   | 12    | 11,3  | 29,5 | 16,1  | 315                               | Press. Elimin. | NBR  | FEC-252-6FB   |
| 3/8"      | G 3/8        | 30     | 87   | 12    | 16,1  | 32   | 19,7  | 250                               | Press. Elimin. | NBR  | FEC-372-6FB   |
| 3/8"      | G 1/2        | 30     | 89   | 14    | 16,1  | 32   | 19,7  | 250                               | Press. Elimin. | NBR  | FEC-372-8FB   |
| 1/2"      | G 1/2        | 40     | 98   | 14    | 17    | 43   | 24,5  | 250                               | Press. Elimin. | NBR  | FEC-502-8FB   |
| 1/2"      | G 3/4        | 40     | 101  | 16    | 17    | 43   | 24,5  | 250                               | Press. Elimin. | NBR  | FEC-502-12FB  |
| 5/8"      | G 3/4        | 40     | 101  | 16    | 17,7  | 43   | 27    | 250                               | Press. Elimin. | NBR  | FEC-622-12FB  |
| 3/4"      | G 3/4        | 50     | 114  | 16    | 22    | 54   | 30    | 250                               | Press. Elimin. | NBR  | FEC-752-12FB  |
| 3/4"      | G 1          | 50     | 120  | 16    | 22    | 54   | 30    | 250                               | Press. Elimin. | NBR  | FEC-752-16FB  |
| 1"        | G 1          | 55     | 126  | 18    | 23,3  | 60   | 36    | 200                               | Press. Elimin. | NBR  | FEC-1002-16FB |
| 1"        | G 1 1/4      | 55     | 130  | 20    | 23,3  | 60   | 36    | 200                               | Press. Elimin. | NBR  | FEC-1002-20FB |

\* For the old part number please have a look on the Cross-Reference-List on page 43.

# Couplings

# FEM-Series

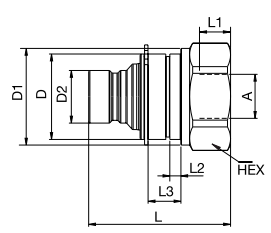


Female Thread  
Provided with Circlip acc. DIN 471

| Body Size | Connect. A | Hex mm | L mm | L1 mm | L2 mm | L3 mm | D mm | D1 mm | D2 mm | Work. Press. con. in bar | Version        | Seal | Part Number*   |
|-----------|------------|--------|------|-------|-------|-------|------|-------|-------|--------------------------|----------------|------|----------------|
| 1/4"      | G 1/4      | 27     | 64   | 12    | 5,2   | 15,3  | 28,8 | 34    |       | 315                      | for Multiplate | NBR  | FEMP-251-4FB   |
| 1/4"      | G 3/8      | 27     | 64   | 12    | 5,2   | 15,3  | 28,8 | 34    |       | 315                      | for Multiplate | NBR  | FEMP-251-6FB   |
| 3/8"      | G 3/8      | 30     | 71   | 12    | 5,2   | 15,3  | 31,8 | 38    |       | 250                      | for Multiplate | NBR  | FEMP-371-6FB   |
| 3/8"      | G 1/2      | 30     | 73   | 14    | 5,2   | 15,3  | 31,8 | 38    |       | 250                      | for Multiplate | NBR  | FEMP-371-8FB   |
| 1/2"      | G 1/2      | 36     | 76   | 14    | 5,2   | 15,3  | 39,8 | 46    |       | 250                      | for Multiplate | NBR  | FEMP-501-8FB   |
| 1/2"      | G 3/4      | 36     | 80   | 16    | 5,2   | 15,3  | 39,8 | 46    |       | 250                      | for Multiplate | NBR  | FEMP-501-12FB  |
| 5/8"      | G 3/4      | 40     | 82   | 16    | 5,2   | 15,3  | 41,8 | 48    |       | 250                      | for Multiplate | NBR  | FEMP-621-12FB  |
| 3/4"      | G 3/4      | 46     | 95   | 16    | 5,2   | 15,3  | 46,8 | 53    |       | 250                      | for Multiplate | NBR  | FEMP-751-12FB  |
| 3/4"      | G 1        | 46     | 101  | 18    | 5,2   | 15,3  | 46,8 | 53    |       | 250                      | for Multiplate | NBR  | FEMP-751-16FB  |
| 1"        | G 1        | 55     | 105  | 18    | 5,2   | 15,3  | 59,8 | 65    |       | 200                      | for Multiplate | NBR  | FEMP-1001-16FB |

# Plugs

# FEM-Series

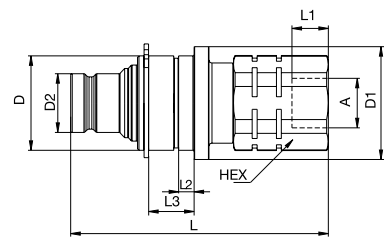


Female Thread  
Provided with Circlip acc. DIN 471

| Body Size | Connect. A | Hex mm | L mm | L1 mm | L2 mm | L3 mm | D mm | D1 mm | D2 mm | Work. Press. con. in bar | Version        | Seal | Part Number*   |
|-----------|------------|--------|------|-------|-------|-------|------|-------|-------|--------------------------|----------------|------|----------------|
| 1/4"      | G 1/4      | 32     | 49   | 12    | 5,2   | 15,3  | 28,8 | 32    | 16,1  | 315                      | for Multiplate | PUR  | FEMP-252-4FB   |
| 3/8"      | G 3/8      | 30     | 58   | 12    | 5,2   | 15,3  | 31,8 | 36    | 19,8  | 250                      | for Multiplate | PUR  | FEMP-372-6FB   |
| 1/2"      | G 1/2      | 45     | 66   | 14    | 5,2   | 15,3  | 39,8 | 45    | 24,5  | 250                      | for Multiplate | PUR  | FEMP-502-8FB   |
| 5/8"      | G 3/4      | 46     | 71   | 16    | 5,2   | 15,3  | 41,8 | 46    | 27    | 250                      | for Multiplate | PUR  | FEMP-622-12FB  |
| 3/4"      | G 3/4      | 50     | 83   | 16    | 5,2   | 15,3  | 46,8 | 50    | 30    | 250                      | for Multiplate | PUR  | FEMP-752-12FB  |
| 1"        | G 1        | 65     | 89   | 18    | 5,2   | 15,3  | 59,8 | 65    | 36    | 200                      | for Multiplate | PUR  | FEMP-1002-16FB |

# Plugs

# FEM-Series



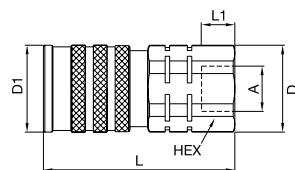
**PE**  
Female Thread  
Provided with Circlip acc. DIN 471

| Body Size | Connect. A | Hex mm | L mm | L1 mm | L2 mm | L3 mm | D mm | D1 mm | D2 mm | Work. Press. con. in bar | Version                  | Seal | Part Number*   |
|-----------|------------|--------|------|-------|-------|-------|------|-------|-------|--------------------------|--------------------------|------|----------------|
| 1/4"      | G 1/4      | 27     | 74   | 12    | 5,2   | 15,3  | 28,8 | 34    | 16,1  | 315                      | Press. El. f. Multiplate | NBR  | FECP-252-4FB   |
| 1/4"      | G 3/8      | 27     | 74   | 12    | 5,2   | 15,3  | 28,8 | 34    | 16,1  | 315                      | Press. El. f. Multiplate | NBR  | FECP-252-6FB   |
| 3/8"      | G 3/8      | 30     | 87   | 12    | 5,2   | 15,3  | 31,8 | 38    | 19,8  | 250                      | Press. El. f. Multiplate | NBR  | FECP-372-6FB   |
| 3/8"      | G 1/2      | 30     | 89   | 14    | 5,2   | 15,3  | 31,8 | 38    | 19,8  | 250                      | Press. El. f. Multiplate | NBR  | FECP-372-8FB   |
| 1/2"      | G 1/2      | 40     | 98   | 14    | 5,2   | 15,3  | 39,8 | 46    | 24,5  | 250                      | Press. El. f. Multiplate | NBR  | FECP-502-8FB   |
| 1/2"      | G 3/4      | 40     | 101  | 16    | 5,2   | 15,3  | 39,8 | 46    | 24,5  | 250                      | Press. El. f. Multiplate | NBR  | FECP-502-12FB  |
| 5/8"      | G 3/4      | 40     | 101  | 16    | 5,2   | 15,3  | 41,8 | 46    | 27    | 250                      | Press. El. f. Multiplate | NBR  | FECP-622-12FB  |
| 3/4"      | G 3/4      | 50     | 114  | 16    | 5,2   | 15,3  | 46,8 | 53    | 30    | 250                      | Press. El. f. Multiplate | NBR  | FECP-752-12FB  |
| 3/4"      | G 1        | 50     | 120  | 16    | 5,2   | 15,3  | 46,8 | 53    | 30    | 250                      | Press. El. f. Multiplate | NBR  | FECP-752-16FB  |
| 1"        | G 1        | 55     | 126  | 18    | 5,2   | 15,3  | 59,8 | 65    | 36    | 200                      | Press. El. f. Multiplate | NBR  | FECP-1002-16FB |

\* For the old part number please have a look on the Cross-Reference-List on page 43.

## Couplings

## IF-Series Stainless Steel

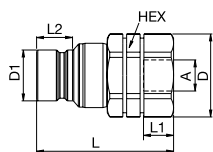


Female Thread

| Body Size | Connection A | Hex mm | L mm | L1 mm | L2 mm | D mm | D1 mm | Working Pressure connected in bar | Version       | Seal | Part Number    |
|-----------|--------------|--------|------|-------|-------|------|-------|-----------------------------------|---------------|------|----------------|
| 1/4"      | G 1/4        | 27     | 64   | 12    |       | 29,5 | 29    | 315                               | Stainl. Steel | FKM  | IF2510 RV      |
| 3/8"      | G 3/8        | 30     | 71   | 12    |       | 32   | 32    | 250                               | Stainl. Steel | FKM  | IF3810 RV      |
| 3/8"      | G 1/2        | 30     | 73   | 14    |       | 32   | 32    | 250                               | Stainl. Steel | FKM  | IF3810-50 RV   |
| 1/2"      | G 1/2        | 36     | 76   | 14    |       | 40   | 39    | 250                               | Stainl. Steel | FKM  | IF5010 RV      |
| 1/2"      | G 3/4        | 36     | 80   | 16    |       | 40   | 39    | 250                               | Stainl. Steel | FKM  | IF5010-75 RV   |
| 5/8"      | G 3/4        | 40     | 82   | 16    |       | 43   | 42    | 250                               | Stainl. Steel | FKM  | IF6310 RV      |
| 3/4"      | G 3/4        | 46     | 96   | 16    |       | 50   | 46    | 250                               | Stainl. Steel | FKM  | IF7510 RV      |
| 3/4"      | G 1          | 46     | 102  | 18    |       | 50   | 46    | 250                               | Stainl. Steel | FKM  | IF7510-100 RV  |
| 1"        | G 1          | 55     | 105  | 20    |       | 60   | 55    | 200                               | Stainl. Steel | FKM  | IF10010 RV     |
| 1"        | G 1 1/4      | 55     | 109  | 18    |       | 60   | 55    | 200                               | Stainl. Steel | FKM  | IF10010-125 RV |

## Plugs

## IF-Series Stainless Steel

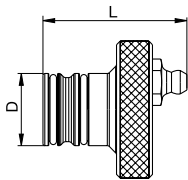


Female Thread

| Body Size | Connection A | Hex mm | L mm | L1 mm | L2 mm | D mm | D1 mm | Working Pressure connected in bar | Version       | Seal | Part Number    |
|-----------|--------------|--------|------|-------|-------|------|-------|-----------------------------------|---------------|------|----------------|
| 1/4"      | G 1/4        | 22     | 49   | 12    | 11,3  | 24,5 | 16,1  | 315                               | Stainl. Steel | FKM  | IF2520 RV      |
| 3/8"      | G 3/8        | 30     | 58   | 12    | 16,1  | 32   | 19,7  | 250                               | Stainl. Steel | FKM  | IF3820 RV      |
| 3/8"      | G 1/2        | 30     | 60   | 12    | 16,1  | 32   | 19,7  | 250                               | Stainl. Steel | FKM  | IF3820-50 RV   |
| 1/2"      | G 1/2        | 36     | 66   | 14    | 17    | 40   | 24,5  | 250                               | Stainl. Steel | FKM  | IF5020 RV      |
| 1/2"      | G 3/4        | 36     | 70   | 16    | 17    | 40   | 24,5  | 250                               | Stainl. Steel | FKM  | IF5020-75 RV   |
| 5/8"      | G 3/4        | 36     | 71   | 16    | 17,7  | 40   | 27    | 250                               | Stainl. Steel | FKM  | IF6320 RV      |
| 3/4"      | G 3/4        | 46     | 77   | 16    | 22    | 50   | 30    | 250                               | Stainl. Steel | FKM  | IF7520 RV      |
| 3/4"      | G 1          | 46     | 83   | 18    | 22    | 50   | 30    | 250                               | Stainl. Steel | FKM  | IF7520-100 RV  |
| 1"        | G 1          | 55     | 89   | 20    | 23,3  | 60   | 36    | 200                               | Stainl. Steel | FKM  | IF10020 RV     |
| 1"        | G 1 1/4      | 55     | 93   | 18    | 23,3  | 60   | 36    | 200                               | Stainl. Steel | FKM  | IF10020-125 RV |

## Lubrication Nipple

## FEM-/IF-Series



| Body Size | Version      | L mm | D mm | Part Number |
|-----------|--------------|------|------|-------------|
| 3/8"      | for coupling | 39   | 20   | GRIF38      |
| 1/2"      | for coupling | 42   | 25   | GRIF50      |
| 5/8"      | for coupling | 43   | 27   | GRIF63      |
| 3/4"      | for coupling | 48   | 30   | GRIF75      |
| 1"        | for coupling | 54   | 36   | GRIF100     |

## Seal-Kit

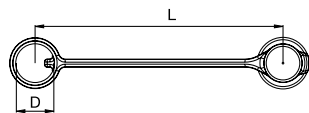
## FEM-/IF-Series

| Body Size | Version   | Material | Part Number  |
|-----------|-----------|----------|--------------|
| 1/8"      | for plugs | NBR      | IF2300-PSN   |
| 1/8"      | for plugs | FKM      | IF2300-PSV   |
| 1/4"      | for plugs | NBR      | IF2500-PSN   |
| 1/4"      | for plugs | FKM      | IF2500-PSV   |
| 1/4"      | for plugs | EPDM     | IF2500-PSEP  |
| 1/4"      | for plugs | PUR      | IF2500-PSPU  |
| 3/8"      | for plugs | NBR      | IF3800-PSN   |
| 3/8"      | for plugs | FKM      | IF3800-PSV   |
| 3/8"      | for plugs | EPDM     | IF3800-PSEP  |
| 3/8"      | for plugs | PUR      | IF3800-PSPU  |
| 1/2"      | for plugs | NBR      | IF5000-PSN   |
| 1/2"      | for plugs | FKM      | IF5000-PSV   |
| 1/2"      | for plugs | EPDM     | IF5000-PSEP  |
| 1/2"      | for plugs | PUR      | IF5000-PSPU  |
| 5/8"      | for plugs | NBR      | IF6300-PSN   |
| 5/8"      | for plugs | FKM      | IF6300-PSV   |
| 5/8"      | for plugs | EPDM     | IF6300-PSEP  |
| 5/8"      | for plugs | PUR      | IF6300-PSPU  |
| 3/4"      | for plugs | NBR      | IF7500-PSN   |
| 3/4"      | for plugs | FKM      | IF7500-PSV   |
| 3/4"      | for plugs | EPDM     | IF7500-PSEP  |
| 3/4"      | for plugs | PUR      | IF7500-PSPU  |
| 1"        | for plugs | NBR      | IF10000-PSN  |
| 1"        | for plugs | FKM      | IF10000-PSV  |
| 1"        | for plugs | EPDM     | IF10000-PSEP |
| 1"        | for plugs | PUR      | IF10000-PSPU |

# Dust Protection

# FEM-/IF-Series

| Body Size | Version      | L mm | D mm | Material | Color | Part Number |
|-----------|--------------|------|------|----------|-------|-------------|
| 1/8"      | for coupling | 145  | 19   | PVC      | Blue  | IB3826      |
| 1/8"      | for plug     | 145  | 19   | PVC      | Blue  | IB2526      |
| 1/4"      | for coupling | 160  | 24   | PVC      | Black | PFE-251-P   |
| 1/4"      | for plug     | 160  | 23   | PVC      | Black | CFE-252-P   |
| 3/8"      | for coupling | 170  | 28   | PVC      | Black | PFE-371-P   |
| 3/8"      | for plug     | 170  | 28   | PVC      | Black | CFE-372-P   |
| 1/2"      | for coupling | 185  | 35   | PVC      | Black | PFE-501-P   |
| 1/2"      | for plug     | 185  | 35   | PVC      | Black | CFE-502-P   |
| 5/8"      | for coupling | 215  | 37   | PVC      | Black | PFE-621-P   |
| 5/8"      | for plug     | 215  | 37   | PVC      | Black | CFE-622-P   |
| 3/4"      | for coupling | 185  | 42   | PVC      | Black | PFE-751-P   |
| 3/4"      | for plug     | 185  | 42   | PVC      | Black | CFE-752-P   |
| 1"        | for coupling | 240  | 50   | PVC      | Black | PFE-1001-P  |
| 1"        | for plug     | 240  | 50   | PVC      | Black | CFE-1002-P  |



Further colors on request.